

WARBLER ON THE WHARF

MILTON KEYNES



MCMULLEN & SONS

Destination Inns

Events Pack



01908 015555

WARBLERONTHEWHARF@MCMULLENS.CO.UK

THE WARBLER ON THE WHARF, CAMPBELL WHARF MARINA, FROBISHER GATE,
NEWLANDS, MK15 0DW



WHO WE ARE

Nestled along the scenic Campbell Wharf on the Grand Union Canal in Milton Keynes, The Warbler on the Wharf is a vibrant social hub for both residents and the local community with a charming outdoor terrace and a south-facing beer garden and balcony that provides a picturesque view of the marina. Situated on a prominent leisure route for cyclists and walkers along the canal, and just a stones throw away from Central Milton Keynes, we offer a welcoming destination for all to enjoy.



OUR HISTORY

Hertford's Brewery has been run by the McMullen family since Peter McMullen established it in 1827. The Whole Hop Brewery can be found in the centre of Hertford and has been designed to ensure we consistently produce ales that meet stringent high standards that reassure cask ale connoisseurs, including our own regulars. From our award-winning Country bitter, locally famous AK or more contemporary kegged beers under our Rivertown sister brewery our team are always on hand to recommend a pint!



WHAT WE DO

Our popular venue boasts contemporary aesthetics, offering a variety of spaces designed to accommodate any type of occasion. Whether it's a birthday bash, a corporate gathering, wake or a wedding celebration, The Warbler on the Wharf is the ideal venue for your next event.



OUR SPACES

Our adaptable first floor can be divided into three separate sections or reserved as one large private area for gatherings of up to 100 people seated. The casual dining space and central section are both suitable for seating of up to 40 guests, making them an ideal choice for casual farewell gatherings with drinks and snacks or family get-togethers!

CASUAL DINING AREA



THE MIDDLE



THE NEST



Our popular private function room offers an elegant ambiance, accommodating up to 36 seated guests. Whether it's a small meeting or a special dinner, we can find the perfect layout for you.

The space features a 65-inch flat-screen television with HDMI and USB connections, complemented by a fully integrated sound system. Additionally, glazed doors provide extra privacy when needed.



FOOD & DRINK

Our team of talented chefs can create a wide selection of menus tailored to your event. Whether you're interested in our premium buffets, specially designed set menus or three-course meals, we can accommodate all tastes.

FIND OUR PUB OR VISIT OUR WEBSITE TO SEE OUR LATEST MENUS

WWW.DESTINATIONINNS.CO.UK/PUBS/WARBLERONTHEWHARF/



BUFFETS

Specifically designed for larger gatherings, our buffet menu draws inspiration from classic British favourites, ensuring a tempting selection for everyone.

Our buffet menu is accessible for pre-booked groups comprising of 25 guests or more. For memorable reunions, social events, and post-work celebrations, let us enhance your experience at The Warbler on the Wharf. Gather all your favourite people and indulge in our premium buffet! Our diverse menu caters to various tastes, and don't worry about dietary requirements – simply discuss your specific needs with us.

BUFFET OPTIONS INCLUDE:

CIABATTA BOARD - POTATO BOARD - MEAT BOARD - PORK BOARD - PLANT BOARD

CHARCUTERIE & BRITISH CHEESE CONES - FISH CONES

DESSERT CONES

For enquiries regarding booking for your upcoming event and to explore our packages, please contact us via email at warbleronthewharf@mcmullens.co.uk

PACKAGES

We know that planning an event can often be stressful. Our friendly events team will be on hand to help every step of the way, to make sure your occasion is one to remember and will run smoothly from start to finish. We pride ourselves on supporting you in the best way we can and giving you the best service and experience possible to make things easy and hassle free.



DAILY DELEGATE

Our daily delegate rate includes the following:

Main meeting room hire for a minimum of 10 guests

- Unlimited tea, and coffee throughout the day
- Mineral water
- Choice of either a buffet lunch or main meal from our daily menu served to your meeting space
- TV screen with HDMI connections and speaker system
- A dedicated team, to ensure your day runs smoothly

NEST LAYOUT SPECIFICATION

BOARDROOM
STYLE



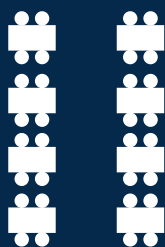
HOLLOW SQUARE
(FROM 9 TO 16)



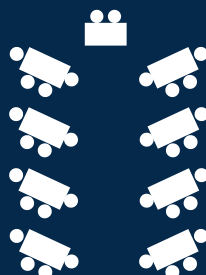
'U' SHAPE
STYLE



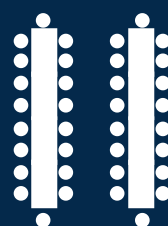
SMALLER
GROUPS



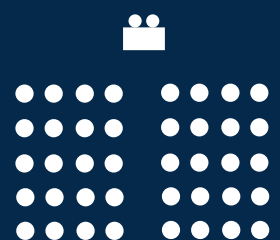
HERRINGBONE
STYLE
(UP TO 32/34)



CLASSIC
LAYOUT



THEATRE STYLE
(UP TO 48)



WEDDING PACKAGE

Our wedding package offers the perfect blend of charm, elegance, and waterfront beauty. Enjoy your wedding function amidst breathtaking views, complemented by our top service and attention to detail. From intimate gatherings to grand celebrations, we tailor each event to reflect your unique story.



Our Wedding function package prices include the following . We can also tailor a package to suit your individual requirements and vision for your special day, should you want something a little different!

1. Exclusive use of our first floor with access to the balcony and it's stunning views of the marina
2. Arrival drink of a glass of Prosecco/Mimosa or orange juice per person
3. Arrival canapés
4. Three-course Wedding Breakfast
5. House wine on tables (house red and white)
6. A glass of Prosecco per person for the toasts
7. Private open bar
8. Premium buffet for the evening guests
9. Full use of our integrated AV equipment, including microphone and TV screen
10. Dedicated wedding coordinator
11. Dedicated bar and restaurant serving team
12. A complimentary menu tasting for two people
13. Table and chair hire (where required)
14. A DJ for the evening reception

Children's Package: Children aged 12 and under includes:

1. Arrival drink of orange juice and lemonade
2. 3 course children's meal with soft drink

There is no day more important than your wedding and therefore you may wish to upgrade or add additional touches to complement and enhance your special day. Our dedicated wedding team are on hand, to make it unique and special. Whether it's a DJ, magic mirror, or casino hire, we offer a variety of options to complement every taste.

For enquiries regarding booking for your wedding reception with us and to explore our package options, please contact us via email at warbleronthewharf@mcmullens.co.uk

WARBLER ON THE WHARF

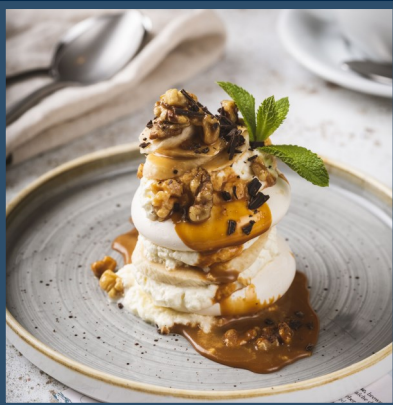
MILTON KEYNES

HOW TO FIND US...



TURN DOWN FROBISHER GATE, TURN LEFT AT GULLIVER'S FARM PARK, DRIVE TO THE END OF THE ROAD AND TURN LEFT.

MILTON KEYNES TRAIN STATION 10MINS(3.4 MI) VIA H5/PORTWAY/A509



**CAMPBELL WHARF MARINA
FROBISHER GATE
NEWLANDS
MILTON KEYNES
MK15 0DW**

OPENING TIMES...

**MON - THURS 11AM - 11PM
FRI - SAT 11AM - 11.30PM
SUN 11AM - 10.30PM**

FOOD TIMES

**MON - SAT 12PM - 9PM
SUN 12PM - 8PM**



WARBLER ON THE WHARF

MILTON KEYNES



CONTACT US

T: 01908 015555

E: WARBLERONTHEWHARF@MCMULLENS.CO.UK

JOIN OUR SOCIALS...



[@warbleronthewharf](https://www.facebook.com/warbleronthewharf)



[@warblermk](https://www.instagram.com/warblermk)



M^cMULLEN & SONS
Destination Inns